

Deirdre

a triangular shawl
by Linden Heflin

This shawl was born as a gift for one of my good friends, Deirdre. I've always admired Deirdre's clean, modern look and I wanted to knit something really stylish for her. I decided to combine stockinette with a basic lace pattern and garter stitch to create a shawl with simple, clean lines.

Materials:

Yarn: Gypsy Girl Creations Fingering Weight (200 yds/skein), Taste of Wine, 2 skeins
Needles: US 2 or size to obtain gauge
Notions: Tapestry needle, 4 stitch markers



Blocked gauge: 21 sts and 28 rows / 4" in St st
Finished Measurements: approximately 56" across, 24" deep

Start Shawl:

CO 3 sts
K 6 rows

Turn work 90 degrees, PU 3 sts along side of tab, turn work 90 degrees, PU 3 sts along CO edge. [9 sts]

Set up row (RS): k3, pm, YO, k1, YO, pm, k1, pm, YO, k1, YO, pm, k3
Row 1 (WS): k3, slm, YO, p to last m, YO, slm, k3
Row 2 (RS): k3, slm, YO, k to next m, YO, slm, k1, slm, YO, k to next m, YO, slm, k3

Repeat rows 1 and 2 until 193 sts
Work row 1 once more [195 sts]

Begin Lace: The lace section consists of the following four rows, also charted below

Row 1 (RS): k3, slm, YO, k1, [YO, k2tog] to 1 st from m, k1, YO, slm, k1, slm, YO, k1, [ssk, YO] to 1 st from m, k1, YO, slm, k3
Row 2 (WS): k3, slm, YO, p1, k2tog, [YO, k2tog] to 1 st from m, YO, k1, slm, p1, slm, p1, YO, [ssk, YO] to 3 sts from m, ssk, p1, YO, slm, k3

Row 3 (RS): k3, slm, k2, YO, [k2tog, YO] to 3 sts from m, k2tog, k1, YO, slm, k1, slm, YO, k1, ssk, [YO, ssk] to 2 sts from m, YO, k2, YO, slm, k3

Row 4 (WS): k3, slm, YO, p2, k2tog, YO, [k2tog, YO] to 3 sts from m, k2tog, YO, p1, slm, p1, slm, p1, YO, ssk, [YO, ssk] to 4 sts from m, YO, ssk, p2, YO, slm, k3

Repeat rows 1-4 a total of 5 times [255 sts]

Edging:

For this section of the shawl, discontinue the YOs on either side of the center stitch, instead using M1R and M1L.

Work two rows of stockinette:

Row 1 (RS): k3, slm, YO, k to next m, M1R, slm, k1, slm, M1L, k to m, YO, slm, k3

Row 2 (WS): k3, slm, YO, p to last m, YO, slm, k3

Continue edging in garter stitch:

Row 1 (RS): k3, slm, YO, k to next m, M1R, slm, k1, slm, M1L, k to m, YO, slm, k3

Row 2 (WS): k3, slm, YO, k to last m, YO, slm, k3

Work 7 total garter stitch ridges
BO all stitches in knit (loosely!)

Abbreviations:

k2tog - knit two stitches together

ssk - slip one stitch as if to knit, then do the same to the next. Knit both together through front loops

M1R - Using left needle, lift loop between sts from the back, knit into front of loop

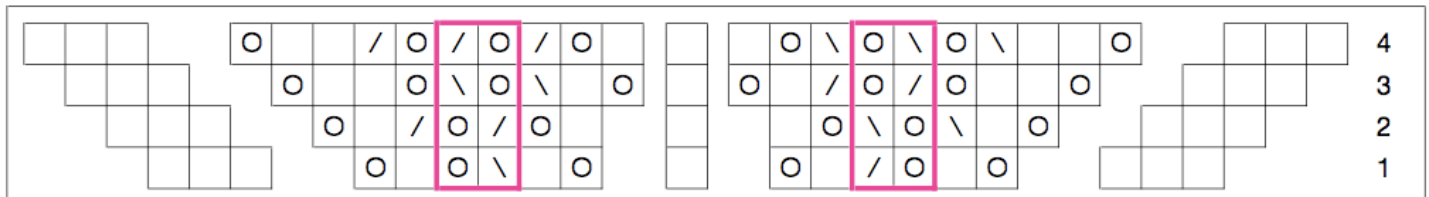
M1L - Using left needle, lift loop between sts from the front, knit into back of loop

(see: <http://www.knittinghelp.com/videos/increases>)

YO - yarn over

PU - pick up

Lace Chart



| | |
|--------------------------|------------------------|
| <input type="checkbox"/> | Knit on RS, purl on WS |
| <input type="radio"/> | Yarn over |
| <input type="checkbox"/> | Slip, slip, knit |
| <input type="checkbox"/> | Knit two together |

